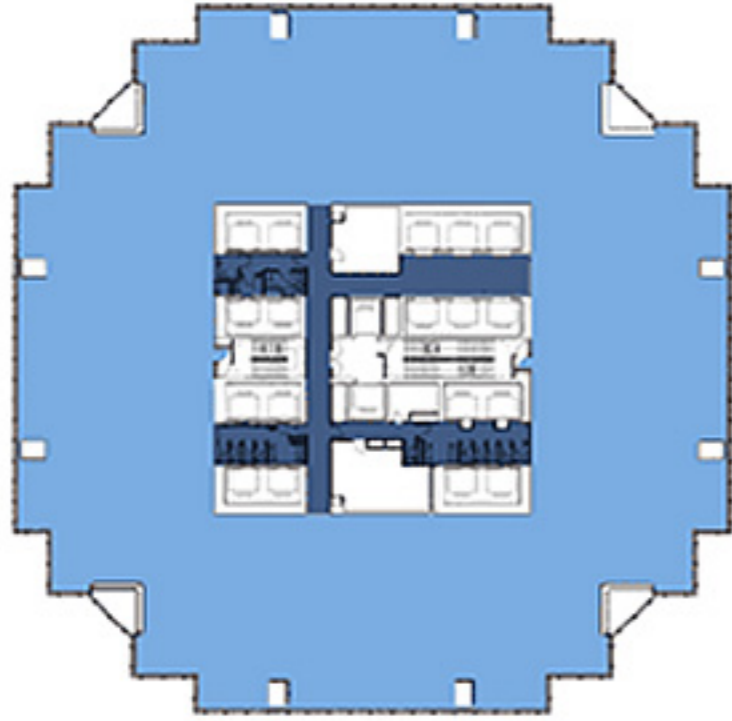
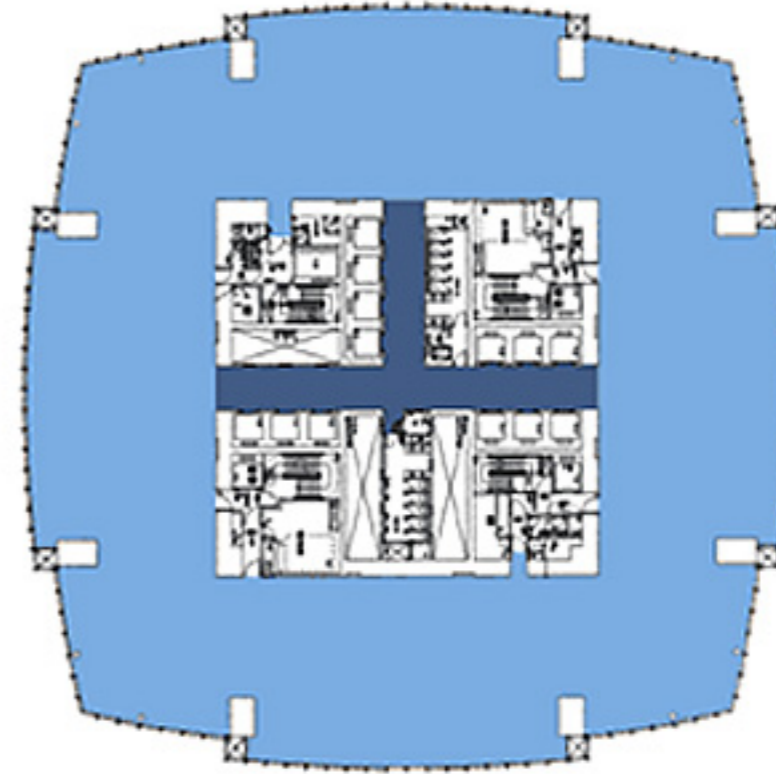


One ifc



- 5/F - 39/F with 4 trading floors
- Approximately 1,950 sq. m (21,000 sq. ft.) lettable per floor
- 150mm raised floor for typical office floors
- 300mm raised floor for trading floors

Two ifc



- 8/F - 88/F with 22 trading floors
- Approximately 2,140 sq. m (23,000 sq. ft.) lettable per floor
- 190mm raised floor for typical office floors
- 340mm raised floor for trading floors

Features

- 2.7m clear ceiling height for typical floors
- 3.3m clear ceiling height for trading floors
- Central core and column-free floor plate
- Double glazing vision glass panel
- Dual power supply risers for all office floors
- Standby generators for tenants' back up power
- Tenants' plant rooms on mechanical floors
- Clean computer earthing system
- 24-hour zoned centralized air-conditioning
- Variable air volume ceiling ducted system - winter heating at perimeter
- 24-hour chilled water supply, backed up by standby air-cooled chiller and generator
- Dual lead-in fibre optics and dedicated tenant riser for contiguous interfloor wiring
- 1,800 car parking spaces

*For more information please contact
our leasing hotline at
(852) 3110 3433.*